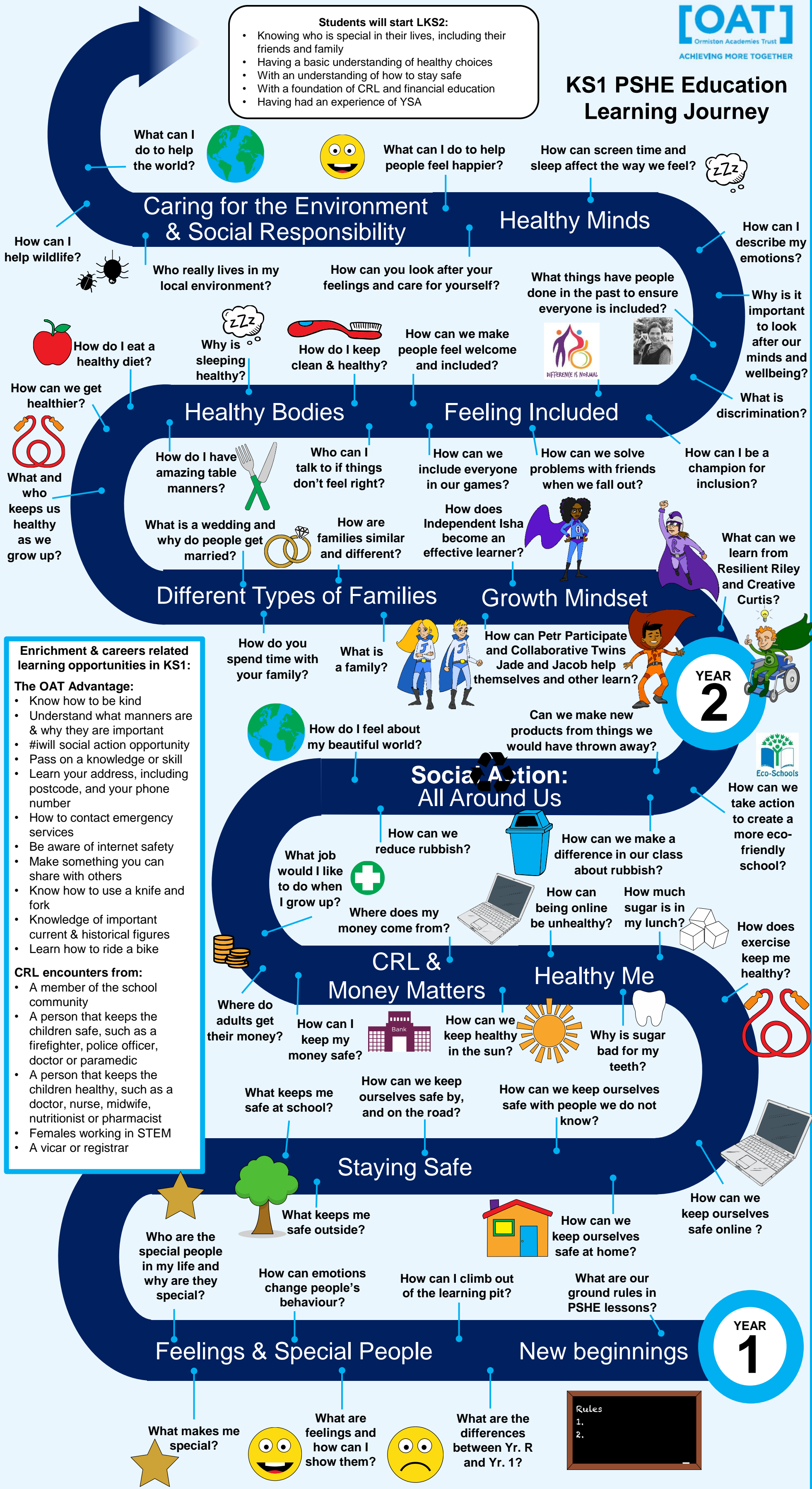


# KS1 PSHE Education Learning Journey

- Students will start LKS2:**
- Knowing who is special in their lives, including their friends and family
  - Having a basic understanding of healthy choices
  - With an understanding of how to stay safe
  - With a foundation of CRL and financial education
  - Having had an experience of YSA



## Enrichment & careers related learning opportunities in KS1:

### The OAT Advantage:

- Know how to be kind
- Understand what manners are & why they are important
- #iwill social action opportunity
- Pass on a knowledge or skill
- Learn your address, including postcode, and your phone number
- How to contact emergency services
- Be aware of internet safety
- Make something you can share with others
- Know how to use a knife and fork
- Knowledge of important current & historical figures
- Learn how to ride a bike

### CRL encounters from:

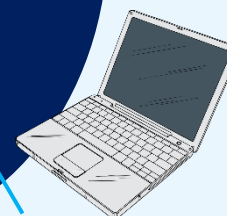
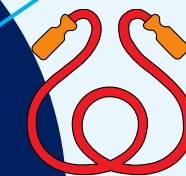
- A member of the school community
- A person that keeps the children safe, such as a firefighter, police officer, doctor or paramedic
- A person that keeps the children healthy, such as a doctor, nurse, midwife, nutritionist or pharmacist
- Females working in STEM
- A vicar or registrar

YEAR  
**2**



How can we take action to create a more eco-friendly school?

How does exercise keep me healthy?



How can we keep ourselves safe online?

YEAR  
**1**

Rules  
1.  
2.